



Installation No.: 02TO
V1, 11-16-2010

Patterns: HTO10, HTO11, HTO11S, HTO20, HTO21, T19HA, T19HB, T19HC, T19HD, T19HE, T19HF, HTO30, HTO31, HTO31P, HTO32, T19DA, T19DB, FTO00, FTO00P, FTO02, FTO02P, FTO05, FTO04P, FTO05, FTO05P, FTO06, FTO06P, FTO07, FTO07P, FTO08, FTO08P, FTO09, FTO09P, FTO10, FTO10P, FTO11, FTO11P, T178A, T178B, T1178C, T178D, ITO36, ITO36C, ITO36P, T10EA, T10EB, HTO12, HTO14, HTO15, HTO18, T191A, T191B, T191C, T191D, HTO56, HTO56S, T19RA, HTO87, HTO88, HTO89, HTO90, HTO91, HTO92, HTO93, HTO94, J2TO92, J2TO93, J2TO94, K2TO04, K2TO04BK, K2TO06, K2TO10, K2TO11, K2TO12, K2TO14, K2TO15, K2TO18, K2TO20, K2TO21, K2TO34, K2TO34B, K2TO36, K2TO36C, K2TO36P, K2TO37, K2TO37C, K2TO41R, K2TO41RM, K2TO41RP, K2SU51, K2SU60, L2SU65, L2TO10, L2TO11, L2TO66, M2TO31, M2TO36, M2TO36C, M2TO92, M2TO93, M2TO94, N2TO06, N2TO06BK, N2TO37B, N2TO66, N2TO94, P2TO11H, P2TO12, P2TO14, P2TO69 T199A, T199B, T199C, T119A, T119B, T119C, GTO66, GTO66P, GTO67, GTO67P, S383A J2TO66, S386A, S316A, GTO04, GTO05, GTO06, ITO04BKT, T12GA, T187A, T187B, T12ER, T12IC, T124K, T12FA, S52EA, S52EB, S52EF, S52EG, T12HA, T12HB, T12HC, T12HD, T12HE, T12HF, T12GB, T10EP, T12ID, T13HA, T13HB, T13HP, T14DA, T149B, T149C, T149F, T14EF, T14EG, T159C

Title: FRONT SIAB STRAP INSTALLATION NOTES

*****CAUTION*****

READ THESE INSTRUCTIONS IN FULL BEFORE BEGINNING ANY WORK ON THE VEHICLE

- A. DURING THE REMOVAL OF THE FACTORY CLOTH SEAT COVERS, PAY CAREFUL ATTENTION TO THE LOCATION, POSITION AND PLACEMENT OF ALL CABLES, CONNECTIONS, STRAPS AND OR ATTACHMENTS IN ORDER TO REPLICATE DURING THE INSTALLATION OF THE KATZKIN LEATHER INTERIOR.**
- B. FAILURE TO FOLLOW INSTALLATION INSTRUCTIONS TO INCLUDE OEM SPECIFICATIONS FOR THE HANDLING OF THE VEHICLE'S COMPONENTS MAY RESULT IN A FAILURE OF THE VEHICLE'S SAFETY SYSTEMS. CONSULT THE VEHICLE MANUFACTURERS INSTRUCTIONS FOR DETAILS.**
- C. IF YOU HAVE QUESTIONS PRIOR TO OR DURING THE INSTALLATION PROCESS, STOP AND IMMEDIATELY CALL KATZKIN'S TECHNICAL SUPPORT SPECIALIST (Doug Hinson 323.610.4540).**

- D. BEFORE BEGINNING YOUR WORK ON THE VEHICLE, DISCONNECT THE NEGATIVE BATTERY TERMINAL TO ENSURE THERE IS NO POWER TO THE VEHICLE.
- E. WAIT FOR AT LEAST 10 MINUTES AFTER DISCONNECTING THE BATTERY CABLE TO AVOID ACCIDENTAL DEPLOYMENT OF THE VEHICLE SAFETY SYSTEM AND/OR RELATED WARNING LIGHTS
- F. IN ORDER TO AVOID DAMAGE, USE CARE WHEN HANDLING THE SEATS OR ANY OTHER VEHICLE COMPONENTS. DO NOT DROP OR DRAG SEATS.

******CAUTION******

BEFORE WORKING ON VEHICLE—MAKE SURE THE NEGATIVE BATTERY TERMINAL HAS BEEN DISCONNECTED FOR AT LEAST 10 MINUTES TO PREVENT ACCIDENTAL AIRBAG DEPLOYMENT



Photo 1.1

1. REMOVE THE NUT AND SEPARATE THE TWO BRACKETS (see Photo 1.1)

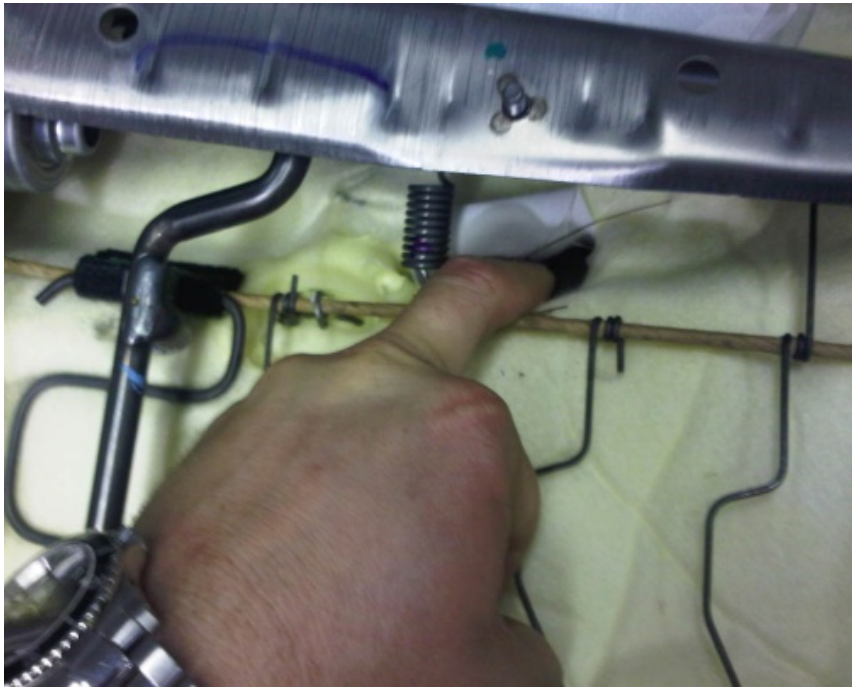
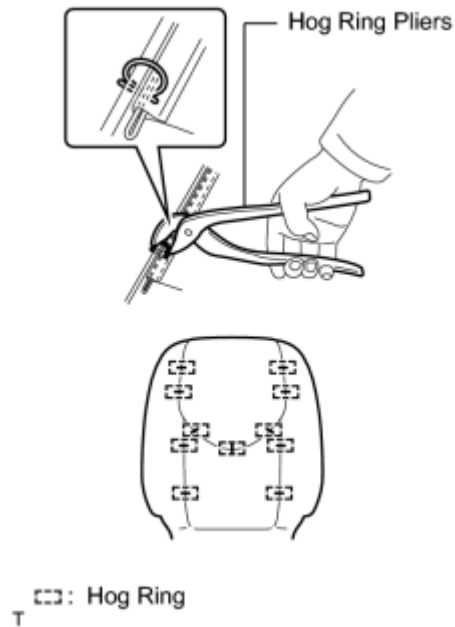


Photo 2.1

2. ROUTE THE SMALL AIRBAG BRACKET BACK THROUGH THE PAD SO IT IS ACCESSIBLE FROM THE FRONT OF SEAT (see Photo 2.1)

3. REMOVE THE FACTORY CLOTH FRONT BACK COVER FROM SEAT BACK.



4. You are now ready to install your new Katzkin Leather front back cover to the front separate type seat back pad with new hog rings. When installing the hog rings, take care to minimize wrinkles in order to achieve good fit and finish.

⚠ Be careful not to damage the cover during installation.



Photo 5.1

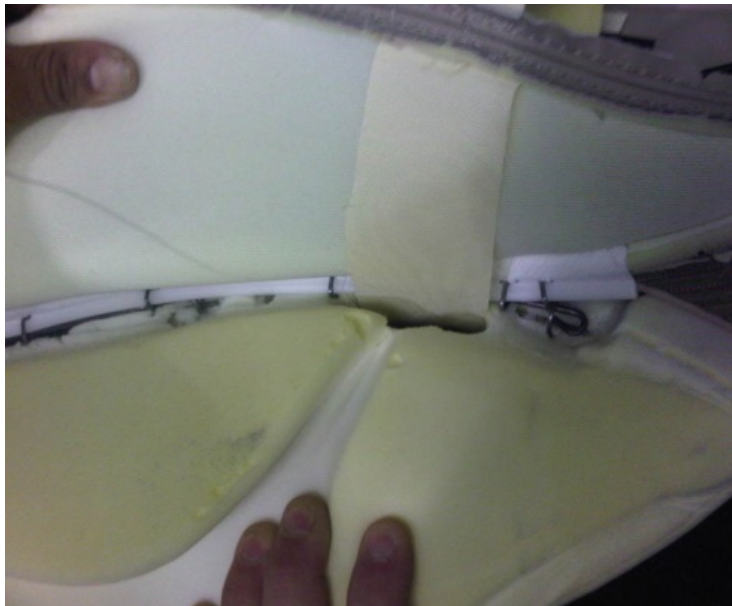


Photo 5.2

5. PROPERLY ROUTE INNER AIRBAG STRAP THROUGH THE OPENING BETWEEN INSERT AND OUTER BOLSTER (INSPECT STRAP TO BE SURE IT IS NOT TWISTED)



Photo 6.1

6. PROPERLY ROUTE OUTER AIRBAG STRAP THROUGH THE OPENING ON THE SIDE OF THE OUTER BOLSTER (INSPECT STRAP TO BE SURE IT IS NOT TWISTED AS SEEN IN PHOTO 6.1)



Photo 7.1



Photo 7.2

7. REINSTALL INNER AND OUTER BRACKET TO FRAME AND REINSTALL NUT AS SEEN IN PHOTO 7.1 AND 7.2.

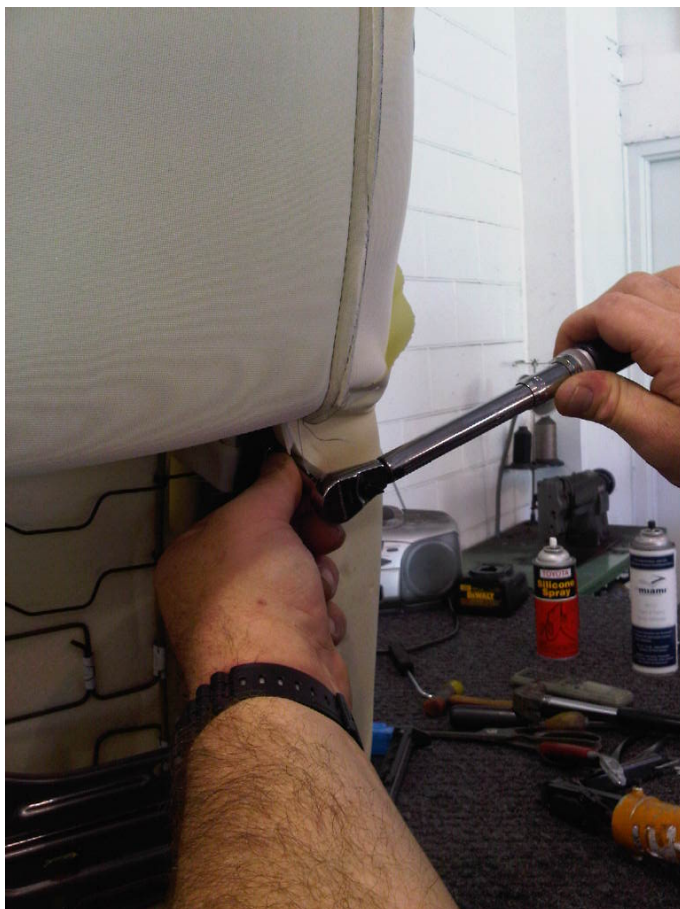


Photo 8.1

8. TORQUE NUT TO PROPER SPECS (see Photo 8.1)

⚠ AIRBAG NUT TORQUE: 5.5 N·m (56 kgf·cm, 49in·lbf)